

Christian Value of the Term: Hope
PSHE Focus: Health and Wellbeing

Year Two

Curriculum Enrichment:
Camber Sands

Maths

Fractions

- Recognise, find, name and write fractions $\frac{1}{2}$ $\frac{1}{3}$ $\frac{1}{4}$ $\frac{2}{4}$ $\frac{3}{4}$ of a length, shape, set of objects or quantity
- Write simple fractions and recognise equivalence

Time

- Compare and sequence intervals of time
- Tell and write the time to five minutes, including quarter past/to the hour
- Draw the hands on a clock face to show these times
- Know the number of minutes in an hour and the number of hours in a day

Statistics

- Interpret and construct pictograms, tally charts, block diagrams and simple tables
- Answer simple questions by counting the number of objects in each category
- Sorting the categories by quantity
- Ask and answer questions about totalling



English

- Write poetry
- Make simple additions, revisions and corrections
- Evaluate writing with the teacher and other pupils
- Re-read to check that writing makes sense and that verbs to indicate time are used correctly and consistently
- Write for different purposes
- Proofread to check for errors in spelling, grammar and punctuation

- Use present and past tenses correctly and consistently including the progressive form
- Use subordination (using when, if, that, or because) and co-ordination (using or, and, or but)
- Use expanded noun phrases to describe and specify
- Add suffixes to spell longer words e.g. -ment, -ful

Reading Skills

Predict

Predict what might happen on the basis of what has been read so far (1e)

Clarify vocabulary

Discuss and clarify the meaning of words, linking new meanings to known vocabulary (1a)

Read and retrieve

Answer and ask questions (1b)

Read and explain:

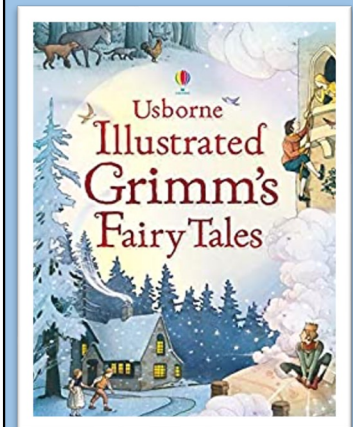
Discuss their favourite words and phrases (1a)

Answer and ask questions (1b)

Introduce non-fiction books that are structured in different ways (1b)

Discuss the sequence of events in books and how items of information are related (1c)

Make inferences on the basis of what is being said and done (1d)



Year Two

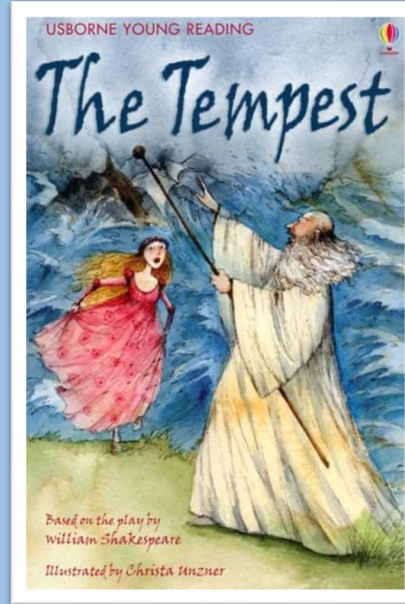
History – What is a monarch

- Changes within living memory. Revealing aspects of change in national life
- Events beyond living memory that are significant nationally or globally
- Significant historical events, people and places in their own locality.

Art- Sculpture & Mixed Media

*To use a range of materials creatively to design and make products *To develop a wide range of art & design techniques in using colour, pattern, texture, line, shape, form & space *To use drawing, painting and sculpture to develop and share their ideas, experiences and imagination

*To know about the work of a range of artists, craft makers & designers, describing the differences & similarities between different practices & disciplines, & making links to their own work.



RE – ISLAM – Who is Muslim and what do they believe?

What do we think about God?

Who was the Prophet Muhammed and why is he important to Muslims?

What stories of the Prophet do Muslims love to tell?

What makes a place or an object special to us? and Muslims?

What is a mosque, and what happened at a mosque?

How and why do Muslims pray and worship at the mosque?

Mosques near where we live: What can we find out?

What can we learn from Muslim holy words?

What happens at the celebration of Eid-ul-Fitr and why?

Who is Muslim and what do they believe?

Science: Exploration of Light (STEM)

-Observe and name a variety of light sources.

-Explore materials which allow light through and those that will not.

-Investigate shadows, explore what may be seen in the dark and use data loggers to help find the best material to make Teddy some sunglasses.

Children investigate different coloured filters for sunglasses for Teddy. Start by using the light sensor to record the light without a filter and with a total block (black card) before looking at the light which travels through the various colours of cellophane.



PE - Sports
Day
Practice
and
Athletics

